



Industry Technology Session

Samantha Miller
FEBRUARY 2025



Introducing



A wide-angle landscape photograph capturing a serene sunset scene. The sun is positioned low on the horizon, casting a warm, golden glow across the sky and the distant mountains. The foreground is dominated by a lush green field, possibly a rice paddy, with a narrow dirt path leading from the bottom right towards the center. On the left side, the corner of a building with a corrugated metal roof is visible. The overall atmosphere is peaceful and picturesque.

Announcing

New Sap-feeding insecticide

A broad-spectrum, low-use-rate insecticide providing market-leading control and with a differentiated mode of action to help manage resistance for these damaging pests.

Key pests controlled:

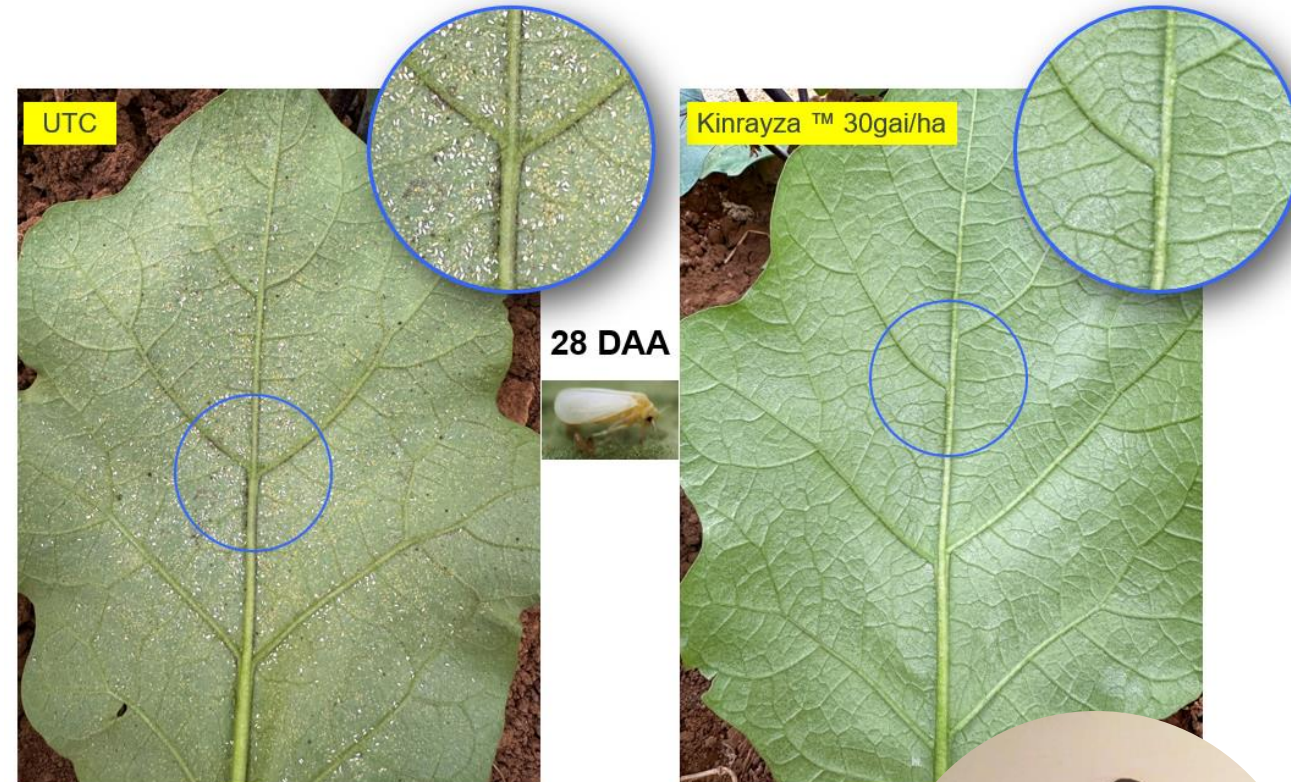
- Whiteflies
- Brown planthoppers
- Leafhoppers
- Jassids
- Spittlebugs
- Mealybugs
- Aphids

Key crops:

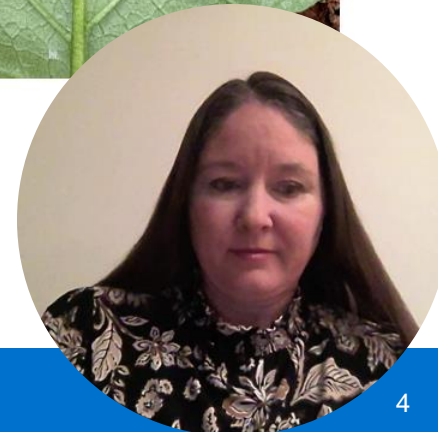
- Fruits & vegetables
- Soybeans
- Rice
- Cotton
- Sugarcane

Special attributes:

- Broad-spectrum to address multiple sap-feeding pests
- Differentiated mode of action to help manage resistance
- Lower-use-rate insecticide vs. benchmark standards
- Compatibility with beneficial arthropods
- Developed for wide use in specialty and row crops



**Development Phase
Launch 2029**



To learn more

Reach out to samantha.miller@corveva.com before submitting a PCR

